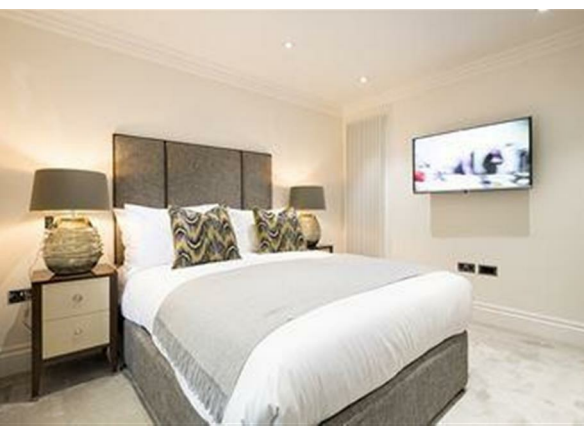
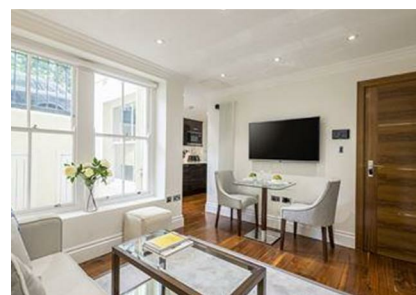


B8 Kensington Garden Square, W2 4BB
£735 Per Week

COMPLETION
SALES & LETTINGS



B8 Kensington Garden Square, W2 4BB

£735 Per Week

Council Tax Band:

This superbly refurbished one-bedroom, one-bathroom apartment (402 sq ft) is set on the lower ground floor of a stunning Grade II listed building in the heart of W2. Blending classic period features with luxury modern finishes, the home offers a beautifully designed bedroom with bespoke fitted wardrobes, an elegant polished marble bathroom, and a stylish reception room complete with custom-made furniture. The fully fitted Miele kitchen adds to the premium feel.

Residents enjoy direct access to one of London's few remaining traditional garden squares—Kensington Garden Square—along with 24-hour security, lift service, laundry facilities, and an out-of-hours maintenance team. The building also benefits from CCTV, high-speed broadband, and the convenience of an on-site building manager, ensuring a seamless living experience with no agency fees.

Located moments from Westbourne Grove, Notting Hill, and Hyde Park, and just a five-minute walk to Bayswater and Queensway stations, this property offers peaceful residential living with superb transport links and amenities on the doorstep.





337 Forest Road
 London
 E17 5JR
 02085277007
enquiries@completion.co.uk
completion.co.uk

